

UBM

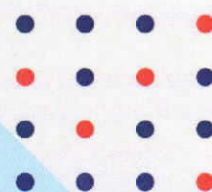
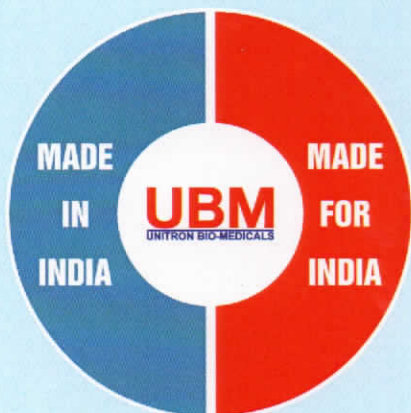
UNITRON BIO-MEDICALS

Complete
Solution for
ELISA & EIA
Tests



Fx19 Lisa Read

AUTOMATIC ELISA READER



Reads Micro Plates Precisely

Fx19 Lisa Read

AUTOMATIC ELISA READER

Features

- Accommodates different microplate geometries U, V & Flat.
- Plate shaking facility with variable speed and duration.
- Ability to read plate within seconds.
- Digital light control with unique circuit for long lamp life.
- Bichromatic readings.
- Flexible controls and calibrators positioning.
- Storage of calibration curves & controls.
- External printer connectivity .
- Patient report with PID & name.
- Various Graph curve fit mode : Linear, Point to Point, 4 parameter log regression, Cubic Spline, Polynomial with scales such as Log Abs / Conc, Logit Abs / Log Conc, Abs / Conc, Log Abs / Log Conc etc.
- Matrix mode for result printing.
- Storage of plate results.
- Data transfer to computer with easy view of results in Excel format.

Specification

OPTICAL SYSTEM

Linear measurement range : 0.000 to 3.500 absorbance units (A).

Photometric accuracy : $\pm 2\%$ or 0.007 whichever is higher from 0 to 1.5 A, $\pm 3\%$ from 1.5 A to 3.5 A.

Drift : <0.005 A/hr.

Resolution : 0.001 Abs.

Light source : Halogen / Xenon with digital light control.

ANALYSIS MODES : Absorbance, Cut-off, Multi-standard, % Absorbance, Single standard.

FILTERS

Type of filter : High quality narrow band interference.

Wavelength : 405, 450, 492, 630 nm & two optional.

Half bandwidth : < 10 nm.

Selection : Automatic by stepper motor.

MEMORY

Programs : 250 tests.

Results : 9600 patient results retrieval Assay wise, Patient wise.

PRINTER : On board thermal 52 columns, maintenance free.

DISPLAY :

Human machine interface : TOUCH PANEL & KEYPAD, 7" Graphics Color Display.

COMPUTER INTERFACE : RS232 Serial Port : 9600 baud, 8 data, 1 stop, no parity bits, USB.

POWER : Voltage : 115 – 230 Volts $\pm 10\%$, 50 – 60 Hz.

CURVE PLOTTING : Graphical representation on printer & display.

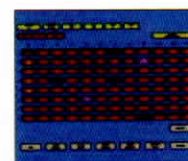
PLATE CARRIER MOVEMENT : Precisely through stepper motor.

DIMENSIONS IN MM (LXBXH) : 385 x 380 x 200 (Approx)

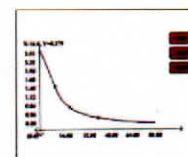
WEIGHT : 10 kgs. (Approx)



Printer



Display



Graph

Unitron Bio-Medicals

Registered Office : Shree Durga, # 464/1, 12th Main Road, 17th 'A' Cross,

J. P. Nagar 5th Phase, Bangalore - 570 078. INDIA

E-mail : info@unitronbiomedicals.com

Web : www.unitronbiomedicals.com

Phone : +91-80-25187600 Customer Care : 94490 09531

Marketed By